



ROSALINE
Jewelry





ROSALINE
Jewelry

SUPERB JEWELERY DESIGN

Behind every exquisite piece by Rosaline Jewelry is a rich history of design, fused with an admiration of modern forms. Rosaline Jewelry draws on a heritage that combines the artful simplicity of traditional Chinese motifs, with an innate love of cutting-edge modern design. The result is a stunning range that is fresh, contemporary and timeless.





EMPEROR BUTTERFLY COLLECTION

"I caught an Emperor butterfly! It's blue... it's royal!"

Rosaline Jewelry 2013 Emperor Butterfly collection captures the rare beauty and royal luxury of "Emperor" on jewelry. This collection is a symbol of pure luxury, uniqueness, classic and modern in all.

It is for your lifestyle, as you are the one and only, Emperor Butterfly.



EMPEROR BUTTERFLY NECKLACE

925 solid silver, with state-of-art enamel pendant, and a Cubic Zirconia crowned center ring, unique custom design chain.

[EMPEROR BUTTERFLY BRACELET SHOWN ON PAGE 5]



ROSALINE
Jewelry



EMPEROR BRACELET

Features butterflies through out the bangle, and black Cubic Zirconia on the butterflies. It is unique, delicate and trendy.



ANGEL EYES SILVER RING

ANGEL EYES SILVER NECKLACE

ANGEL EYES SILVER COLLECTION

The Angel Eyes' collection has been inspired by the love of life. An idea brought to life in the form of an eye—the window to the heart and soul—a combination of sterling silver with turquoise and white jade.





ANGEL EYES SILVER BRACELET



ANGEL EYES SILVER EARRINGS



ANGEL EYES GOLD RING

ANGEL EYES GOLD COLLECTION

The Angel Eyes' collection has been inspired by the love of life. An idea brought to life in the form of an eye—the window to the heart and soul—a combination of gold with abalone shell and white jade.



ANGEL EYES GOLD NECKLACE



ANGEL EYES GOLD BRACELET



ANGEL EYES GOLD EARRINGS



ROSALINE
Jewelry



PEARL DRAGON BRACELET
925 Sterling silver and 18k gold-plated with pearl. Elegant Chinese dragon tail bracelet.

A silver chain necklace with a central pendant. The pendant features a curved, polished silver bar that resembles a dragon's tail, which is wrapped around a large, round, pinkish-red pearl. The pearl is set in a gold-toned bezel. The chain is made of interlocking oval links.

PEARL DRAGON NECKLACE

PEARL DRAGON COLLECTION

2012 is the Year of the Water Dragon. This piece shows the Dragon tail wrapped around a pearl. The contrast of gold and silver draws attention to the movement of the Dragon's tail, depicting its power. The pearl softens the power somewhat, injecting a hint of calm and tranquility in explosive dynamism.





PEARL DRAGON RING



PEARL DRAGON EARRINGS



EVE'S GARDEN BRACELET



EVE'S GARDEN EARRINGS

EVE'S GARDEN COLLECTION

The collection has a delicate and unique appearance representing the greenery in nature, and symbolizing the future.



EVE'S GARDEN NECKLACE

EVE'S GARDEN RING







WAVES OF LOVE GOLD RING
24k gold coated with Cubic Zirconia



ROSALINE
Jewelry



WAVES OF LOVE BRACELET

WAVES OF LOVE COLLECTION

This collection captures the essence of the waves of love. It is powerful, yet peaceful. Swathes with layers of love. Three different sizes of hearts are featured in this collection.



WAVES OF LOVE RING



WAVES OF LOVE NECKLACE



WAVES OF LOVE EARRINGS



ROSALINE
Jewelry

Dandelion Gold Collection.



DANDELION WITH SHELL BRACELET
925 Sterling silver bracelet representing nature. Includes 3 silver flower balls (1.7cm each) with a naturally-cut, rare shell rock and pink pearl spacer bracelet



DANDELION NECKLACE

DANDELION COLLECTION

The Dandelion collection is inspired by the simple beauty and quiet aesthetic of the dandelion. "Dandelion's are beautiful because when the wind blows, one dandelion becomes a hundred flying dandelions, and wherever they land, whether its on rocks or grass, each can grow and make a hundred more dandelions. Quiet, humble, the dandelion is a symbol of perseverance and the beauty of nature," explains designer Roz Liang when asked for her inspiration for the collection. Each "dandelion" is made with solid 925 Sterling Silver and Gold, and is interposed with hand selected raw shells or all natural rock crystals that have been hand polished by skilled artisans, so that each alternating element plays off the other to create a complete piece that celebrates the raw yet refined beauty of nature. Shop the Dandelion collection for a piece of luxury jewelry that celebrates your natural beauty.



DANDELION WITH SHELL BRACELET

DANDELION EARRINGS





CELTIC BRACELET

CELTIC COLLECTION

Designers have always looked to history for artistic inspiration. From the symmetry and patterns of the Celtic culture came the inspiration for the Celtic collection by Rosaline. Our Celtic pieces are beautifully sophisticated and yet charmingly historic—the perfect piece of fine jewelry for day-to-evening wear. Crafted with hand selected freshwater pearls and solid 925 Sterling Silver and gold, the Celtic collection infuses culture and sophistication into any wardrobe.

**Also available in silver.*



CELTIC EARRINGS



CELTIC NECKLACE



ROSALINE
Jewelry

LYVIA COLLECTION

The Lyvia collection is delicate, feminine, and fresh. Exquisitely cut and hand crafted, each Lyvia piece simultaneously evokes old world grandeur and fresh, youthful beauty. Subtle angles recall the skilled craftsmanship of medieval and Renaissance artists, while the vibrant green of the crystals adds a fresh vivacity and sparkling life to this beautiful collection. Shop the Lyvia collection for fine jewelry that is delicate and feminine, yet brilliant in color and bold in personality.

LYVIA GOLD EARRINGS



LYVIA GOLD NECKLACE





ROSALINE
Jewellery



FALLING LEAVES COLLECTION

There are few things more beautiful than autumn leaves of dark gold and rich reds falling slowly from the thick, gnarled branches of ancient trees—the quiet autumnal breezes filled with the aroma of sweet honey and fresh apples. From the beautifully rich sensory details of autumn comes the Falling Leaves collection, a breathtaking assembly of gold and silver luxury jewelry pieces that embody the essence of fall. The delicate leaves are layered to fall against one another to recreate the idea of leaves falling gracefully to the earth. These exquisite pieces are a delightful celebration of Mother Earth and her natural elegance.



FALLING LEAVES NECKLACE



FALLING LEAVES EARRINGS



ROSALINE
Jewelry



FLEUR DE LIS DUAL LAYER NECKLACE

925 Sterling silver 2 single-layered (short and long) with a black onyx Fleur De Lis pendant, and 4 black onyx beads.

FLEUR DE LIS BRACELET



STAINLESS STEEL
FLEUR DE LIS RING



FLEUR DE LIS COLLECTION

Found on innumerable coats of arms and flags throughout European history, the fleur-de-lis is a historically significant symbol, continuing to appear in the arms of the King of Spain and the Grand Duke of Luxembourg today. With a rustically medieval look, the Fleur de Lis collection draws inspiration from this simple three-leaved symbol that has prevailed through Western history. Created with top grade sterling silver and black onyx, pieces in the Fleur de Lis collection are strong and bold, wearable by both men and women. Shop the Fleur de Lis collection for fine bridge jewelry pieces inspired by old world nobility and European history.



STAINLESS STEEL
FLEUR DE LIS RING



FLEUR DE LIS NECKLACE



FLEUR DE LIS EARRINGS



EMPEROR BUTTERFLY COLLECTION



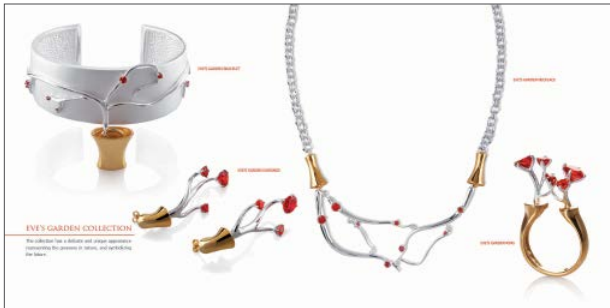
ANGEL EYES COLLECTION SILVER



PEARL DRAGON COLLECTION



ANGEL EYES COLLECTION GOLD



EVE'S GARDEN COLLECTION



FLEUR DE LIS COLLECTION



WAVES OF LOVE COLLECTION



DANDELION COLLECTION



LYVIA COLLECTION



FALLING LEAVES COLLECTION



CELTIC COLLECTION



MEN'S COLLECTION

www.RosalineJewelry.com

Tel: 888-306-6036

Tel: 858-207-4600

Fax: 888-988-6036

4660 La Jolla Village Dr. #500

San Diego, CA 92122



ROSALINE
Jewelry

visit us online at
www.RosalineJewelry.com

Tel: 1-888-306-6036 / 858-207-4600

DESIGNER'S COLLECTIONS | PRIVATE LABEL PRODUCTION | WHOLESALERS